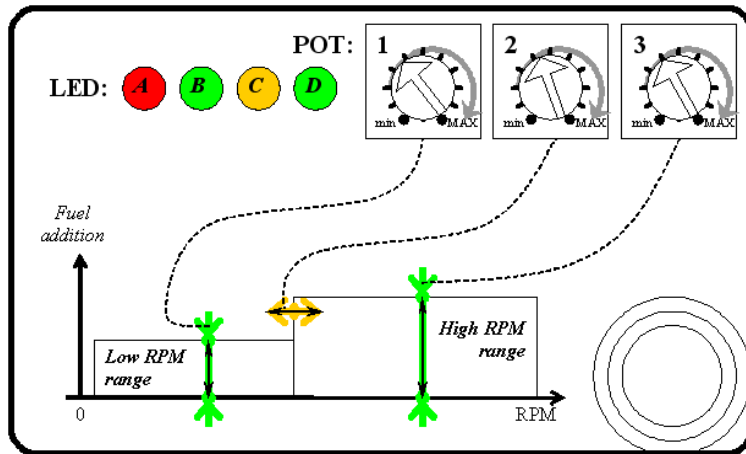


INSTALLATION MANUAL: ELECTRONIC FUEL INJECTION SYSTEMS

HPI – Kuilenstraat 97, 3960 Bree, Belgium
 TEL: (0032) 089-46 74 39 | FAX: (0032) 089-47 33 28 | GSM: (0032) 0495-53 90 21
 Email: hpi@hpi.be | Website: www.hpi.be



LEDs meaning:

- **LED A blinks fast:**
The unit is initialising
- **LED A blinks slow:**
The engine is running stationary
- **LED A lights up:**
The engines runs in low RPM range
- **LED A & B lights up:**
The box is adding fuel in low RPM range
- **LED C lights up:**
The engines runs in high RPM range
- **LED C & D lights up:**
The box is adding fuel in high RPM range

POTs purpose:

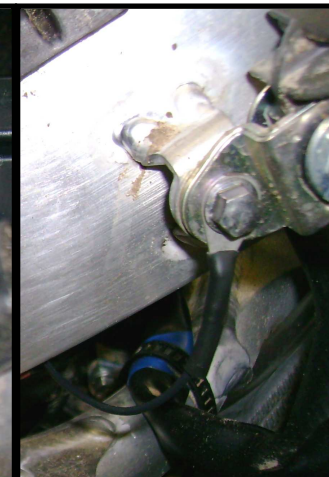
- Turn POT 1 to change the fuel addition in low RPM range.
LED B off -> no fuel addition
 - Turn POT 2 to determine the low and high RPM range.
LED C on -> high RPM range
 - Turn POT 3 to change the fuel addition in high RPM range.
LED D off -> no fuel addition
- Turning the POTs (1&3) clockwise adds more fuel or enlarges the low RPM range (POT 2)



1. Detach the connector from the injector



2. Place the EFI box between the original connectors



3. Attach the mass ring to the frame



4. Place the EFI box in the bag in the air filter house